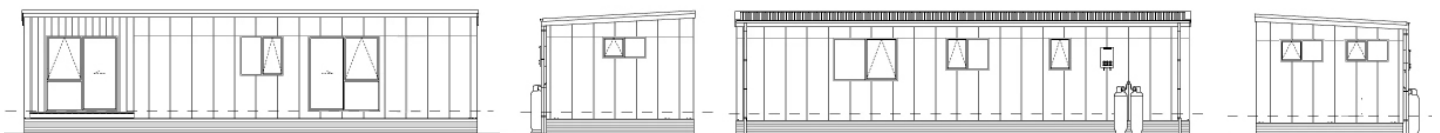




View pricing for the [Mamaku 350](http://www.footprinthomes.co.nz) at [www.footprinthomes.co.nz](http://www.footprinthomes.co.nz)



**MAMAKU 50sqm:** Cleverly designed for modern living, the Mamaku shows how a well-planned 50m<sup>2</sup> home can feel open. With three bedrooms and thoughtfully designed living areas, it's an ideal option for families, guests, or shared living. Large sliding doors connect the light-filled living space to a sunny outdoor deck, creating an easy flow between indoors and out. Add a pergola or outdoor shelter and you've instantly created a welcoming space for entertaining, relaxing, or enjoying long summer evenings. Practical, stylish, and versatile, the Mamaku makes compact living feel effortless. **Note:** The photo above is an artist's impression. Please refer to the [specifications](#) sheet for details of our standard inclusions.