



CLEVER  LIVING CO.

Your home MADE POSSIBLE



ANGUS HOME



DEXTER HOME



SUFFOLK HOME



OXFORD HOME



HIGHLAND HOME



HEREFORD DUPLEX HOME



SEASONAL ACCOMMODATION



GARAGES

CLEVER LIVING CO. *Your home* **MADE POSSIBLE**



CONTENTS

WHO WE ARE	4
HOW WE WORK	5
SMART LIVING	6
THE HOMES	7
THE ANGUS	8-9
THE DEXTER	10
THE SUFFOLK	11
THE OXFORD	12-13
THE HIGHLAND	14
THE HEREFORD DUPLEX	15
SEASONAL ACCOMMODATION	16
GARAGES	17
NEXT STEPS	18
MOVE IN SOONER	19

This brochure shows photography of actual Clever Living Co. homes that have been built for clients. The photographs are indicative only as these homes were finished to meet individual clients' preferences and may differ to the standard finishes and internal fixtures outlined in this brochure. Artist renders featured in the brochure are also indicative only. All decks and internal furnishings shown in the photographs and/or artist renders are excluded. All building materials and inclusions are subject to change and maybe substituted prior to order confirmation. Resource consents, building consents and necessary planning permission are still required to be eligible for a Code Compliance Certificate.

WHO WE ARE

Clever Living Co. isn't your typical building company.

We offer a range of expertly designed house plans with materials supplied by Bunnings Trade. Each house has a clever use of space, is engineered for New Zealand conditions, comes packed with extra features, and uses quality products supplied by trusted brands.

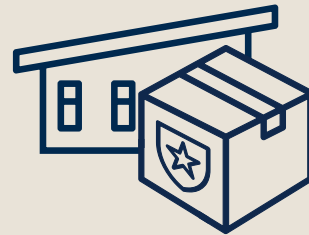


HOW WE WORK



OUR PROCESS

When building a Clever Living Co. home, we team you up with an approved licensed builder to guide you through the entire process of bringing your new home to life.



QUALITY BRANDS

Our homes are packed with features and appliances from a range of quality and trusted brands.



QUICKER CONSENTS

A selection of our homes come with MBIE MultiProof approval, which means the building consent process is much easier, so you get to move in faster.



SUPPLIED BY BUNNINGS TRADE

The appliances, features, and materials that go into our Clever Living Co. homes are supplied by Bunnings Trade, ensuring quality and affordability.

SMART LIVING



Now home automation is for everyone

Our homes come fitted with Grid Connect Smart Features, allowing you to turn power outlets on or off, view footage from the included security camera, and set the mood via dimmable lighting all from your phone.

gridconnect.co.nz



GARAGE



SECURITY



HEATING



DOORBELL



POWER



WALL SWITCH



COOLING



LIGHTING



THE HOMES

We offer a range of home designs to suit a range of lifestyles. Whether you're looking to upsize, downsize, or just start your home owning journey, one of our homes will be perfect for you.



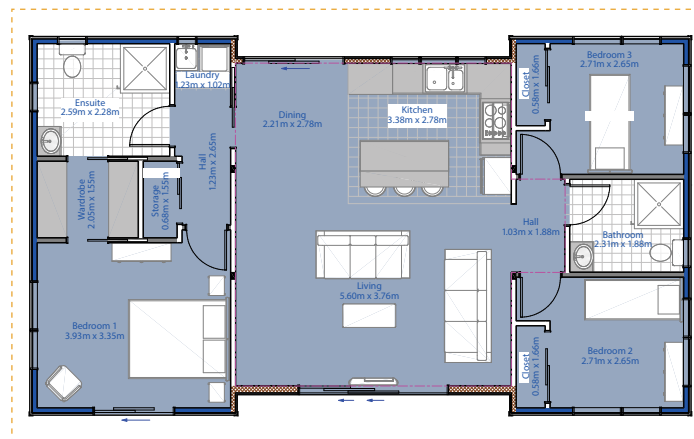


THE ANGUS

The Angus is our most popular design, made for those who need a bit more space in their at-home lives. It offers high ceilings and a central open-plan living area with an indoor-outdoor flow. The master bedroom stretches across one end of the house with its own ensuite, connected via a walk-in wardrobe. At the other end, you'll find two more bedrooms and a second bathroom.

FEATURES

- Master bedroom with an ensuite and a walk-in wardrobe.
- Central open-plan kitchen-living area.
- Smart home features with Grid Connect.
- Triple sliding doors.
- Dedicated laundry.



97m²



Living	5.6m x 3.76m
Kitchen	3.38m x 2.78m
Bathroom	2.31m x 1.88m
Master Bedroom	3.93m x 3.35m
Walk-in Wardrobe	2.05m x 1.55m
Ensuite	2.59m x 2.28m
Bedroom 2	2.71m x 2.65m
Bedroom 3	2.71m x 2.65m



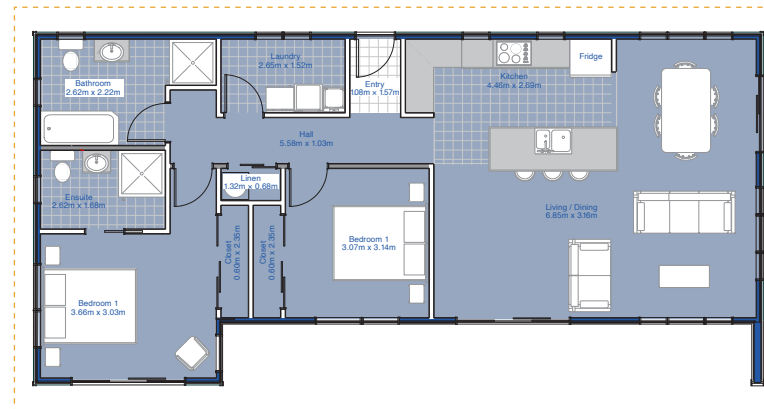


THE DEXTER

The largest of our two-bedroom homes, the Dexter provides plenty of room for living whilst remaining suitable for most section sizes. It offers high ceilings with a spacious open-plan living and kitchen area at one end of the house, and two generously sized bedrooms with built-in wardrobes at the other.

FEATURES

- Master bedroom with an ensuite.
- Central open-plan kitchen-living area.
- Smart home features with Grid Connect.
- Double sliding doors.
- Dedicated laundry.



101m²



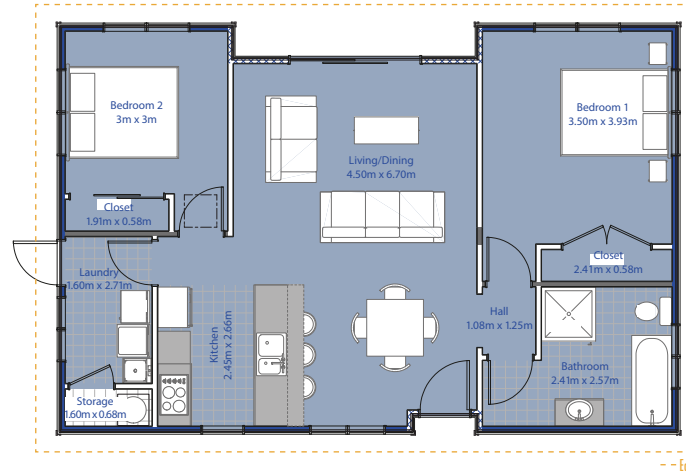
Living/Dining	6.9m x 3.17m
Kitchen	4.46m x 2.69m
Bathroom	2.67m x 2.22m
Master Bedroom	3.71m x 3.03m
Ensuite	2.67m x 1.68m
Bedroom 2	3.07m x 3.14m

THE SUFFOLK

Cleverly designed, the Suffolk uses space efficiently to pack in a whole lot of features. It offers a master bedroom with its own built-in closet, a second double bedroom, and a dedicated laundry room – all connected by a generous central open-plan kitchen-living area.

FEATURES

- Generous master bedroom.
- Central open-plan kitchen-living area.
- Smart home features with Grid Connect.
- Double sliding doors.
- Dedicated laundry.



11.42m x 7.50m

83m²



Living	4.50m x 6.70m
Kitchen	2.15m x 2.57m
Bathroom	2.41m x 2.57m
Master Bedroom	3.50m x 3.93m
Bedroom 2	3m x 3m



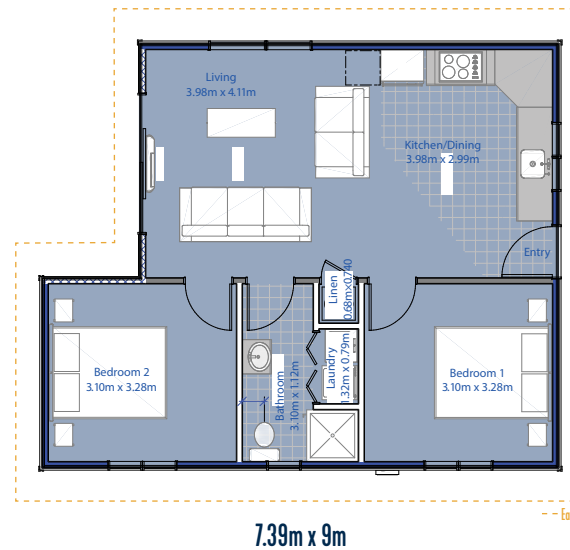


THE OXFORD

Our most compact home, an efficient use of space means there's still plenty of room for you to enjoy. Providing an open-plan kitchen-living area and two double bedrooms, it's full-sized living with a convenient footprint.

FEATURES

- Compact design for smaller sections.
- Central open-plan kitchen-living area.
- Smart home features with Grid Connect.
- Double sliding doors.
- High ceilings.



60m²



Living	3.98m x 5.01m
Kitchen	2.80m x 2.99m
Bathroom	2.04m x 3.12m
Bedroom 1	3.10m x 3.28m
Bedroom 2	3.10m x 3.28m



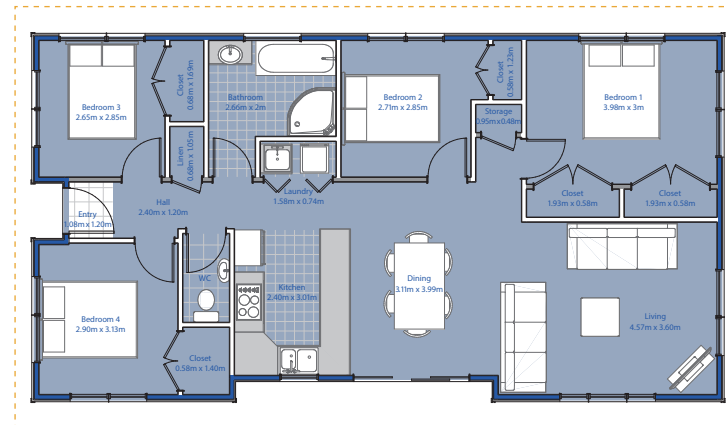


THE HIGHLAND

The largest of our standard designs, the Highland is built for families and comfortable living. A full-sized living room, dining area and kitchen make up the heart of the home, surrounded by four double bedrooms, 1.5 bathrooms and a dedicated laundry space.

FEATURES

- Generous master bedroom.
- Central open-plan kitchen-living area.
- Smart home features with Grid Connect.
- Triple sliding doors.
- Dedicated laundry and storage areas.



14.38m x 7.60m

106m²



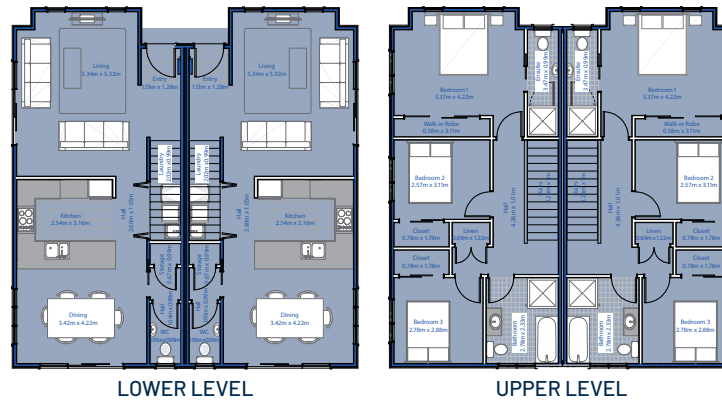
Living	4.57m x 3.60m
Kitchen	2.40m x 3.01m
Bathroom	2.66m x 2m
Master Bedroom	3.98m x 3m
Bedroom 2	2.71m x 2.85m
Bedroom 3	2.65m x 2.85m
Bedroom 4	2.90m x 3.13m

THE HEREFORD DUPLEX

Our take on the duplex – perfect for subdividers, investors, and those just looking to make the most of their land. Each unit offers three generous bedrooms, with an ensuite in the master. Downstairs, you'll find a large open-plan kitchen-dining area that caters nicely to social or family lifestyles, and a large living room.

FEATURES

- Two self contained units.
- Open-plan kitchen-living areas.
- Smart home features with Grid Connect.
- Double sliding doors.



11.62m x 11.14m

126.13m² per unit



Hereford Duplex consists of two units. Single unit size and room measurements are listed directly below.

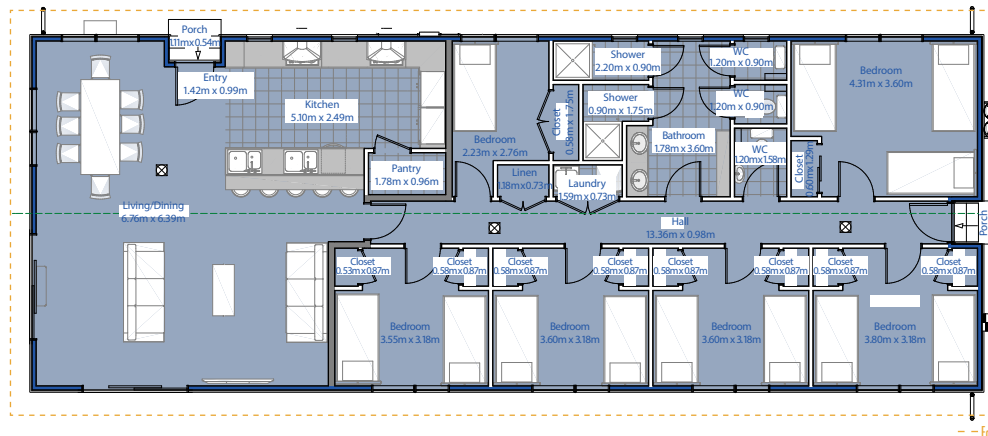
Living	5.36m x 3.95m
Kitchen	1.99m x 3.08m
Bathroom	2.35m x 2.8m
Master Bedroom	3.39m x 4.24m
Ensuite	3.49m x 1.01m
Bedroom 2	2.59m x 3.13m
Bedroom 3	2.8m x 3.13m





SEASONAL ACCOMMODATION

A convenient accommodation solution designed to house seasonal workers, backpackers, and students. Suitable for up to twelve residents, it's complete with a large communal kitchen, spacious common area, and ample washing facilities.



179m²



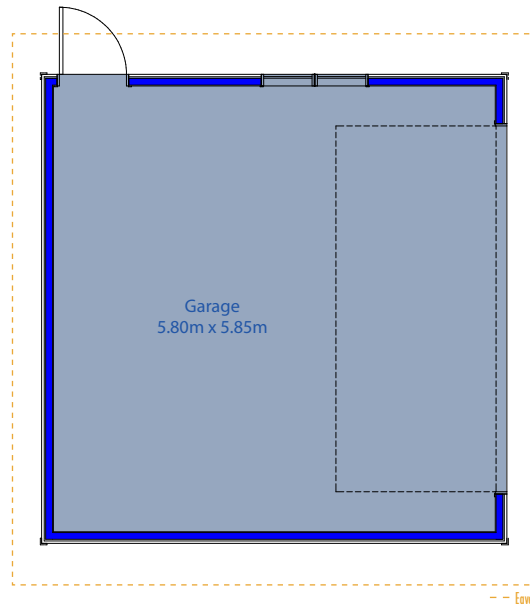
Living	6.76m x 6.39m
Kitchen	5.10m x 2.49m
Bathroom	7.04m x 3.62m
Bedroom 1	4.31m x 3.60m
Bedroom 2	2.23m x 2.76m
Bedroom 3	3.80m x 3.18m
Bedroom 4 & 5	3.60m x 3.18m
Bedroom 6	3.55m x 3.18m

GARAGES

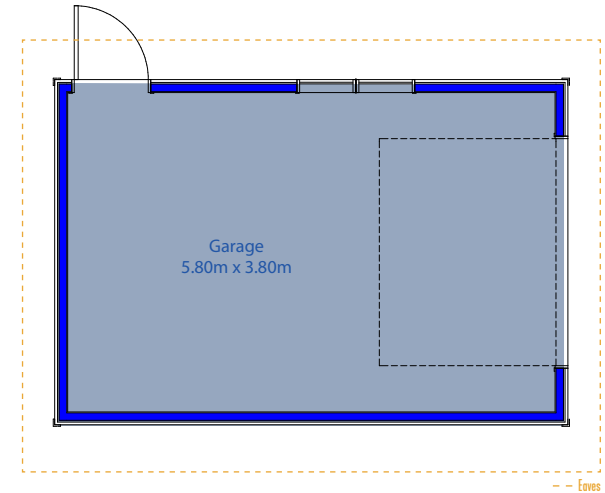
We don't just build homes for people. We also offer single and double garage options that can match the style of any Clever Living Co. home you choose.

FEATURES

- Built to match your Clever Living Co. home with the same colours, cladding, and roof lines.
- Available as a single or a double unit – whatever suits your needs.
- All garages come equipped with a remote operated door.



5.80m x 5.85m



5.80m x 3.80m



MOVE IN SOONER WITH MULTIPROOF

The Angus, Dexter, Oxford, Suffolk and Highland house designs come with an MBIE MultiProof approval, which makes the building consent process much faster, and gets you into your new home sooner.

MultiProof approval for standardised building designs is a certification given to building plans and specifications that comply with the New Zealand Building Code (NZBC).

Our MultiProof designs will still need to go through the building consent application process. This allows the Building Consent Authority (BCA) to confirm:

- The design, with any permitted variations, is the same as the design approved in the MultiProof.
- The proposed site meets the conditions of the MultiProof.
- Any site-specific features comply with the NZBC.
- Which inspections might be required.

NEXT STEPS

Once you've decided to build a Clever Living Co. home, we'll team you up with an approved licensed building practitioner. They'll be there to guide you from the start of the process right up until you turn the key for the first time.

First, the builder and their crew of experts will establish your needs, site, and budget. This usually involves a visit to where you want to build and finalising the following details:

- Picking the best Clever Living Co. home design for you.
- Your choice of colours and fittings.
- Whether to build on or off-site.
- Any extra features such as a garage or deck.



Supplied by
**BUNNINGS
TRADE**

**CLEVER LIVING CO.**

Your home **MADE POSSIBLE**

**FH FOOTPRINT
HOMES NZ**
SMALL LIFESTYLE LIVING

If you have any questions or feel
ready to get started on your
new home, get in touch by:

Freephone **0800 000 222**

Email: **info@footprinthomes.co.nz**

Website: **www.footprinthomes.co.nz**