

Modular design for modern living.



**FH FOOTPRINT
HOMES NZ**
SMALL LIFESTYLE LIVING

HABITAT RANGE

Clever design is about creating efficiencies within the home, not increasing the size of it.

www.footprinthomes.co.nz

Habitat Housing.

Live mindfully

Clever design is about creating efficiencies within the home and building process, not increasing the size of it.

Our prefabricated exterior panels and cassette flooring significantly reduce build time; cost savings that are best spent elsewhere.

Modern living need not be a financial sentence, nor should it compromise on aesthetic design.

We partner only with reputable brands and license building practitioners to deliver an expertly crafted home you will be immensely proud of.



What separates us?

It's what is on the inside that counts...



Modular prefabrication is our preferred construction method. Each wall is carefully manufactured to meet industry standards and certification.



Modular components are delivered direct to site ready to be installed, reducing construction time and labour costs.



Our wall systems are nog free and come standard with external Oriented Strand Board (OSB). OSB is exceptionally strong, highly water resistant and cost effective. Allowing the build to achieve weather tightness quicker.



For a room to feel spacious, factors like ceiling height matter. All our homes come with standard 2.7m high stud for a roomy feel.



Habitat Housing structural timber is locally sourced and renewable.



Changes to the Building Code clause H1 bring the biggest energy efficient improvements in over a decade. All Habitat Housing homes meet H1 standards. Enjoy improved thermal efficiency, meaning a drier warmer home in winter and reduced heat in the summer.



Habitat Housing Range
CONTENTS

Classic

Maple	(60sqm)	06 - 07
Fusion	(78.7sqm)	
Emerald	(99.5sqm)	08 - 09
Estuary	(104.3sqm)	10 - 11

Architectural

Monarch	(146.7sqm)	14 - 15
Alpine	(Coming soon)		

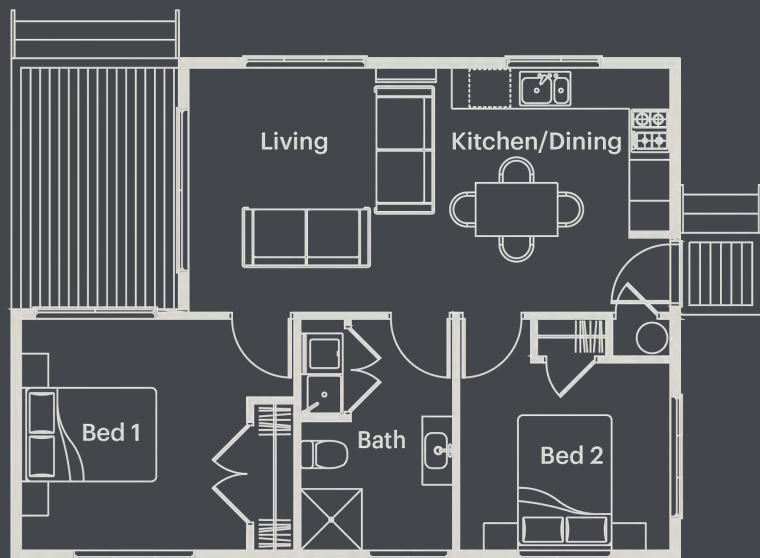
House Inclusions	20
Optional Upgrades	21



MAPLE - 60SQM

Habitat Housing's Maple offers a range of benefits that make it a compelling option for those seeking a more affordable, sustainable, and minimalist lifestyle.

Functional single living with generous kitchen and living area will surprise.



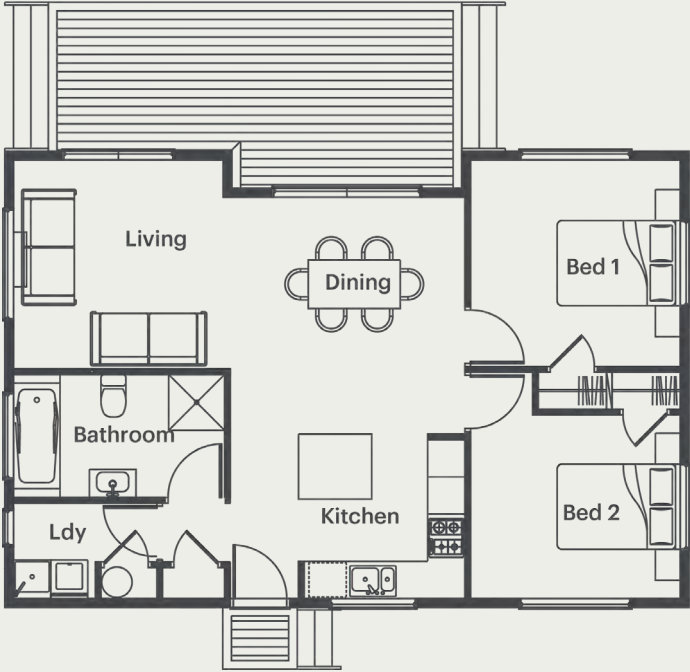
Indicative renders.



FUSION - 78.7SQM

The Fusion offers a comfortable, affordable, and sustainable living space that can accommodate different lifestyles, from singles and couples to smaller families.

A mindful living space can help you focus on what truly matters.



Indicative renders.



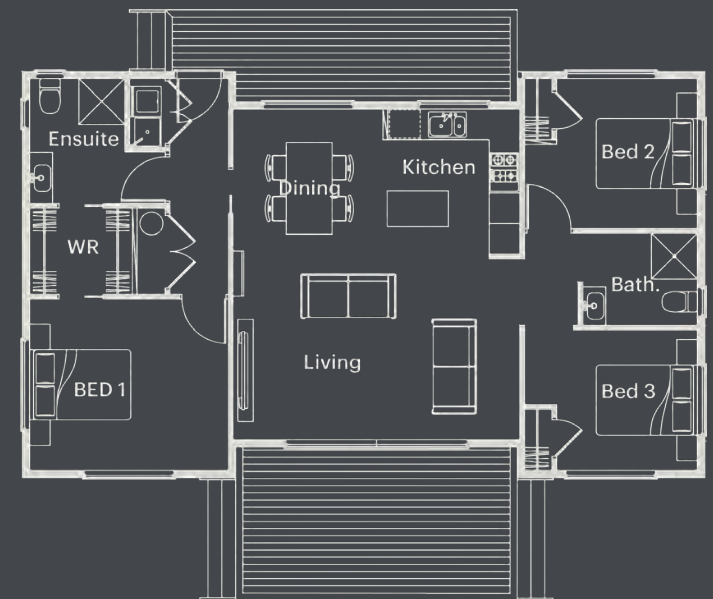




EMERALD- 99.5SQM

The Emerald, at 99.5 square meters, offers a comfortable and versatile living space, making it an ideal choice for families of all sizes.

Its balance of space and affordability provides a spacious yet manageable environment. Featuring a large living area and an expansive master bedroom with multiple bathrooms.



Indicative renders.







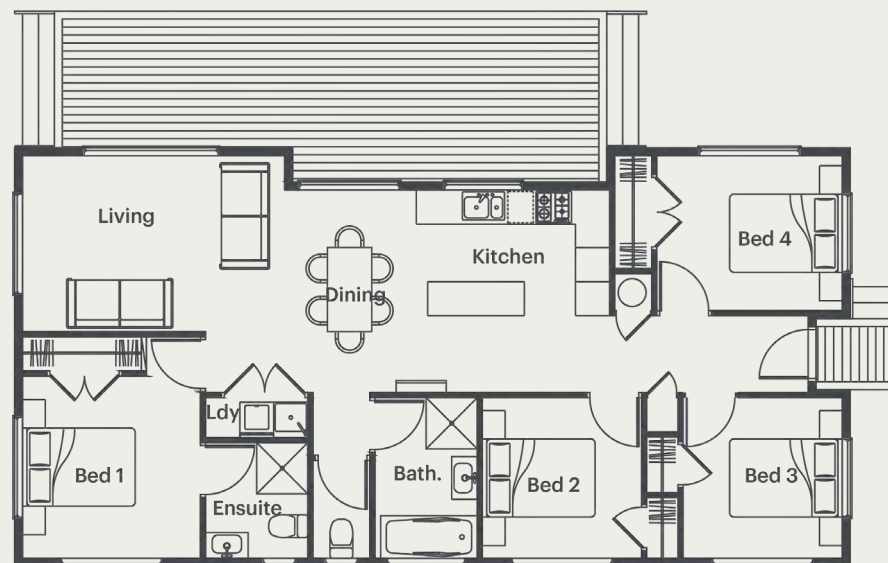
ESTUARY - 104.3SQM

The 104.3 square meter Estuary home is designed with families in mind, offering four bedrooms, two bathrooms, and a spacious living area for comfortable and convenient living.

Its seamless indoor-outdoor flow makes it perfect for entertaining guests.



Indicative renders.



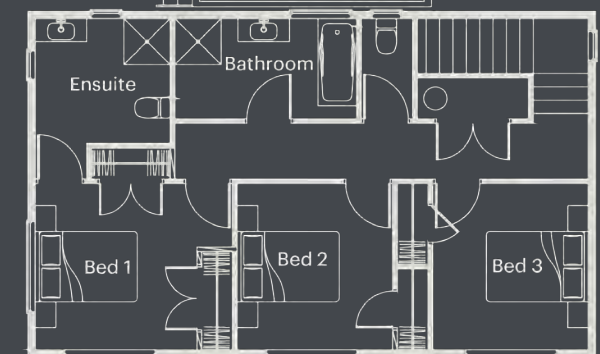
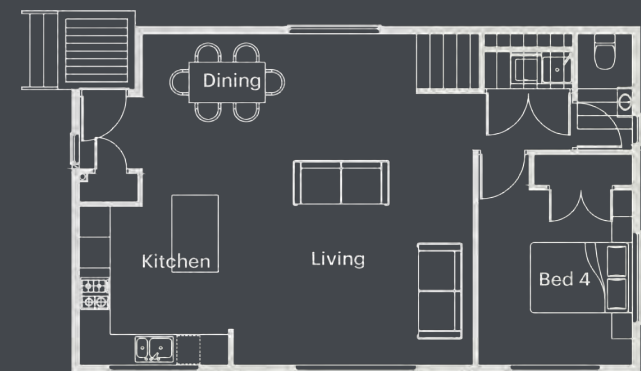


MONARCH - 146.7SQM

The Monarch, the largest home in the Habitat Housing range, spans a generous 146.7 square meters.

Its ground-floor layout is perfect for everyday family life, while the spacious upstairs provides privacy and tranquillity.

 3  4  1

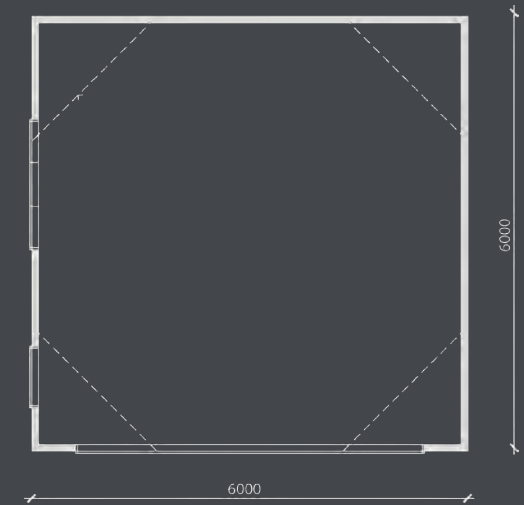




ZEN (Garage)- 36SQM

The ZEN is a versatile addition to the Habitat Housing range of products, initially designed as a garage but adaptable to serve as a functional utility area.

Its compact size and flexible design make it a valuable asset for homeowners seeking additional storage or workspace.





HOME INCLUSIONS - EXTERIOR

- » **Underfloor Insulation**

- » **Structure**

Pre fab wall panels with option of 140mm SG8 or 90mm LVL

- » **Cladding**

BGC Duragroove & Nuline

- » **Soffits**

BGC Durasheet

- » **Fascia**

H3 timber fascia

- » **Roofing**

- » **Rainwater System**

- » **Joinery**

Thermal broken double glazed joinery

- » **Base Boards/Decking**

Premium timber decking



HOME INCLUSIONS - INTERIOR

- » **Insulation**

R4.5 Ceiling and R3.6 Ultra Wall insulation

- » **Linings**

10mm GIB plasterboard for walls and ceiling

- » **Finishings**

60mm beveled skirtings, 40mm beveled architraves

- » **Interior Doors**

Hollowcore 1980 high doors with hardware

- » **Bathroom**

Newline & Elementi products

- » **Kitchen & Wardrobes**

UNO cabinetry with Laminate benchtops

- » **Lighting**

- » **Kitchen Appliances**

*Excluding Fridge

- » **Miscellaneous**

DVS Home Ventilation system (Excluded from Petite Range)

AHI Carrier Heat pump (Excluded from Petite Range)

Hot water cylinder

Optional Upgrades (POA)

- Solar power systems.
- Cassette Flooring fitted with 19mm H3 Plyfloor & supplied with Expol R3.1 underfloor insulation.
- Hip, Gable or Mono-Pitch roof options.
- Concrete floor option.
- Woodgrain, Ultragloss or Ultratouch cabinetry.
- Appliance upgrades.
- Stone benchtops.
- Exterior Cladding alternatives e.g. Timber, Accoya, Palliside.
- Options to include a pergola.



**FOOTPRINT
HOMES NZ**
SMALL LIFESTYLE LIVING



HABITAT HOUSING RANGE: www.footprinthomes.co.nz | info@footprinthomes.co.nz